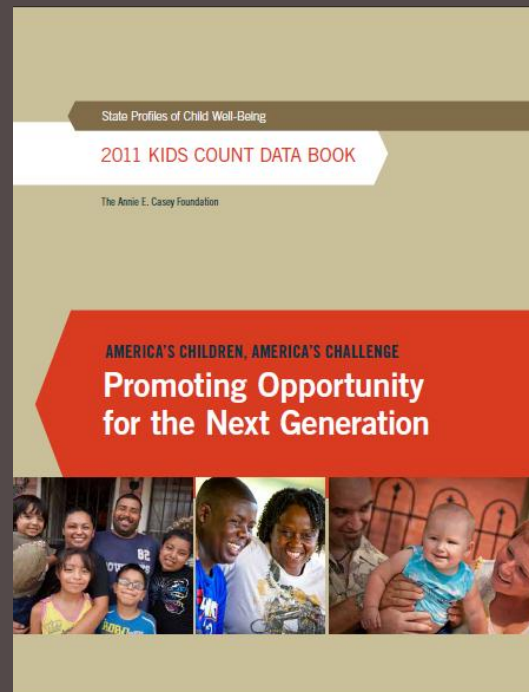


2011 WISKIDS COUNT COMMUNITY CONVERSATION



Wausau, WI
TUESDAY,
SEPTEMBER
20, 2011

WISCONSIN COUNCIL ON CHILDREN AND FAMILIES

- Established 1881
- The Council is a private, non-profit, non-partisan statewide organization with offices in Madison Wisconsin.
- The Council is a multi-issue child and family advocacy organization, providing research, policy analysis, public education and advocacy that lead to improved outcomes for children.
- Find more at <http://www.wccf.org>



WISCONSIN COUNCIL ON

**children
& families**

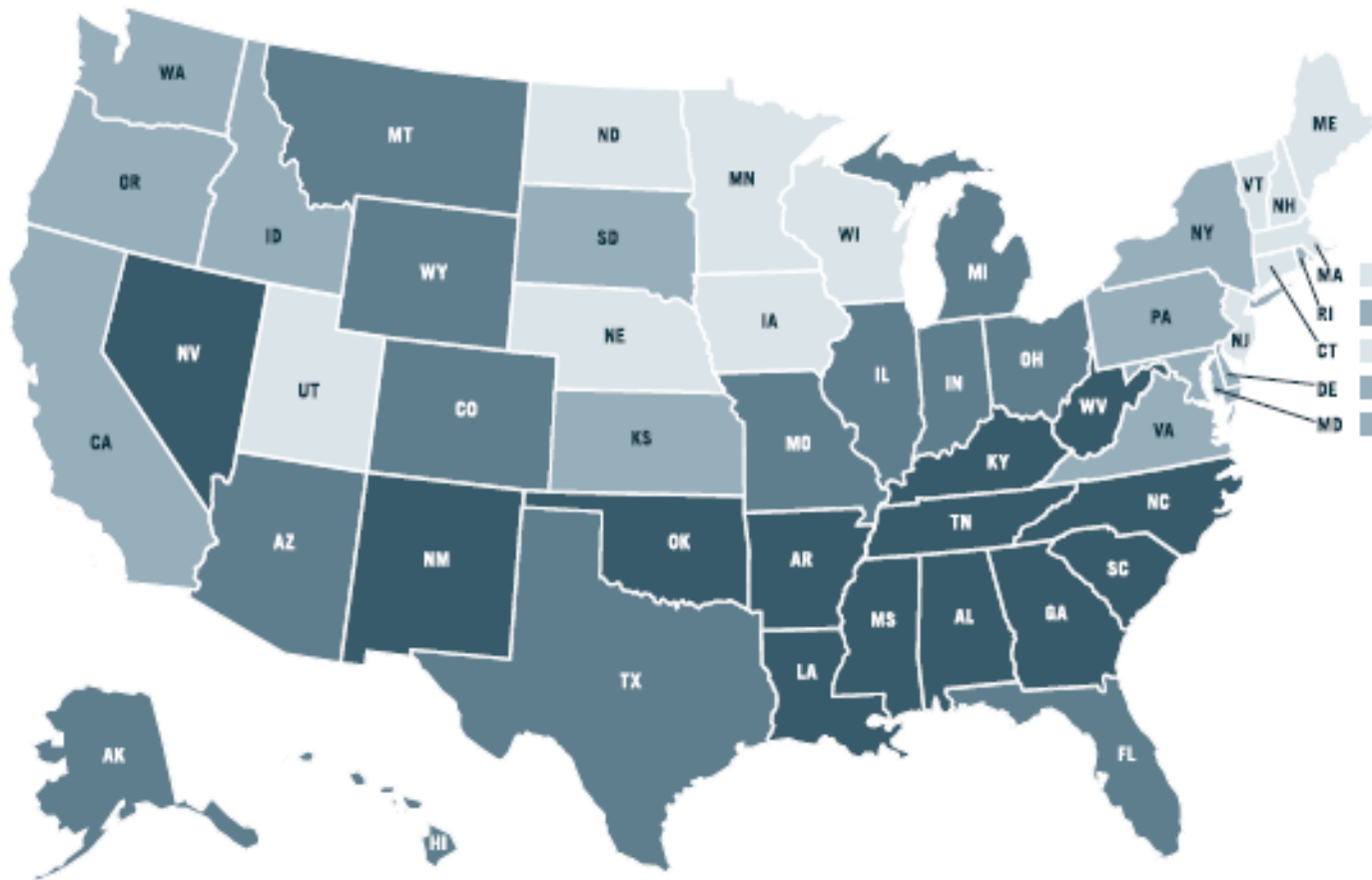
Raising Voices to Make Every Kid Count

National *KIDS COUNT* Data Book

- Uses best available data to monitor state-level child well-being
- Produced annually since 1990
- Ranks states based on 10 key indicators
- Includes range of developmental stages and areas of well-being



2011 KIDS COUNT OVERALL RANKING



Top 3
NH - 1
MN - 2
MA - 3

Bottom 3
AL - 48
LA - 49
MS - 50

WI - 12

Rate 1 to 12 Rate 13 to 24 Rate 25 to 37 Rate 38 to 50

2011 KIDS COUNT Data Book

The Annie E. Casey Foundation

Wisconsin

12

OVERALL RANK

5

IMPROVED

3

WORSENE

0

UNCHANGED

KEY INDICATORS

STATE TREND

NATIONAL TREND

NATIONAL RANK

KEY INDICATORS	STATE TREND	NATIONAL TREND	NATIONAL RANK
Percent low-birthweight babies <small>(deaths per 1,000 live births)</small>	2000 6.5 2008 7.0 8%	2000 7.6 2008 8.2 8%	13
Infant mortality rate <small>(deaths per 1,000 live births)</small>	2000 6.6 2007 6.5 -2%	2000 6.9 2007 6.8 -1%	19
Child death rate <small>(deaths per 100,000 children ages 1-14)</small>	2000 20 2007 19 -5%	2000 22 2007 19 -14%	19
Teen death rate <small>(deaths per 100,000 teens ages 15-19)</small>	2000 66 2007 64 -3%	2000 67 2007 62 -7%	24
Teen birth rate <small>(births per 1,000 females ages 15-19)</small>	2000 35 2008 31 -11%	2000 48 2008 41 -15%	11

2011 KIDS COUNT Data Book

The Annie E. Casey Foundation

Wisconsin

12

OVERALL RANK

5

IMPROVED

3

WORSENER

0

UNCHANGED

KEY INDICATORS

STATE TREND

NATIONAL TREND

NATIONAL RANK

Percent of teens not in school and not high school graduates (ages 16–19)

2000
2009

6
4

-33%

2000
2009

11
6

-45%

3

Percent of teens not attending school and not working (ages 16–19)

2000
2009

N.A.
6

—

2000
2009

N.A.
9

—

2

Percent of children living in families where no parent has full-time, year-round employment

2000
2009

N.A.
27

—

2000
2009

N.A.
31

—

14

Percent of children in poverty (income below \$21,756 for a family of two adults and two children in 2009)

2000
2009

12
17

42%

2000
2009

17
20

18%

18

Percent of children in single-parent families

2000
2009

28
30

7%

2000
2009

31
34

10%

12

PERCENT CHANGE OVER TIME

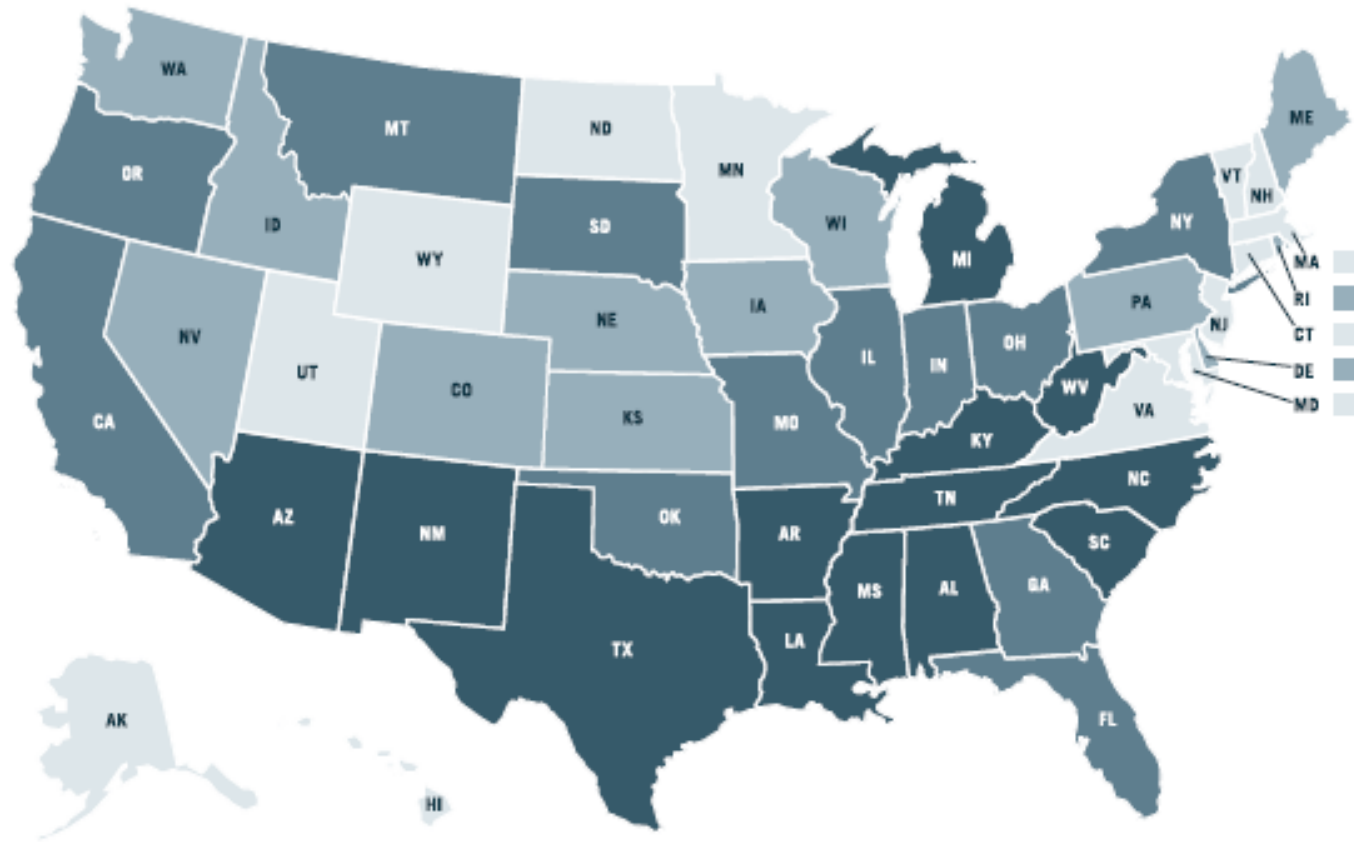
GETTING BETTER

GETTING WORSE

Find more state and community-level data at the KIDS COUNT Data Center: datacenter.kidscount.org/WI

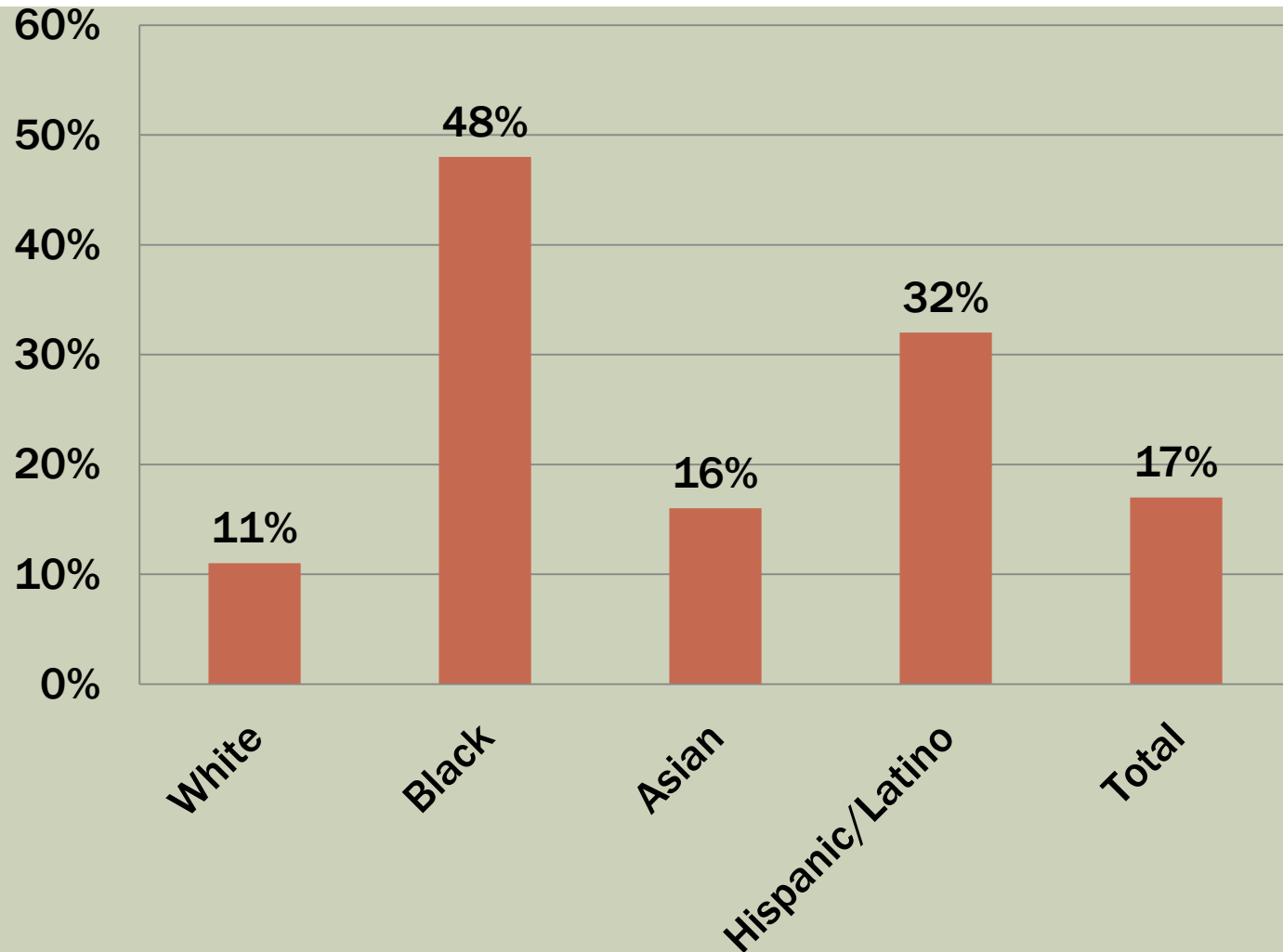
N.A.: Comparable data not available for 2000 for these indicators. Find more information and the definitions and data sources for indicators at: datacenter.kidscount.org/databook/2011

Percent of Children in Poverty (income below \$21,756 for a family of two adults and two children in 2009): 2009



11 to 14 15 to 18 19 to 22 23 to 31

CHILD POVERTY IN WISCONSIN, 2009

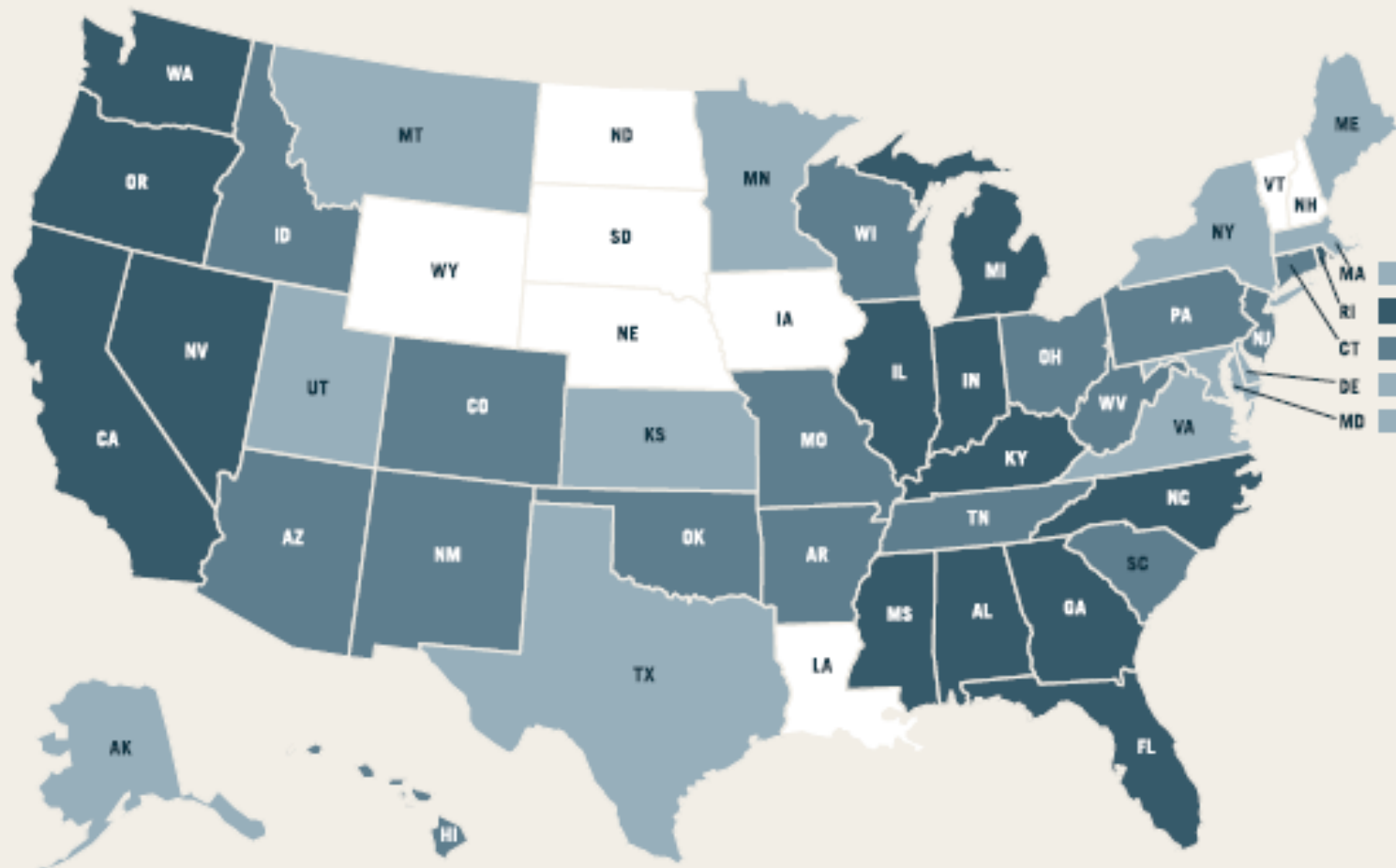


CHILD POVERTY UP 40% IN WISCONSIN, MARATHON COUNTY

- Wisconsin Child Poverty ↑ 42%
 - 2000: 12%
 - 2009: 17%

- Marathon County Child Poverty ↑ 55%
 - 2000: 9%
 - 2009: 14%

Percent of Children With at Least One Unemployed Parent by State: 2010



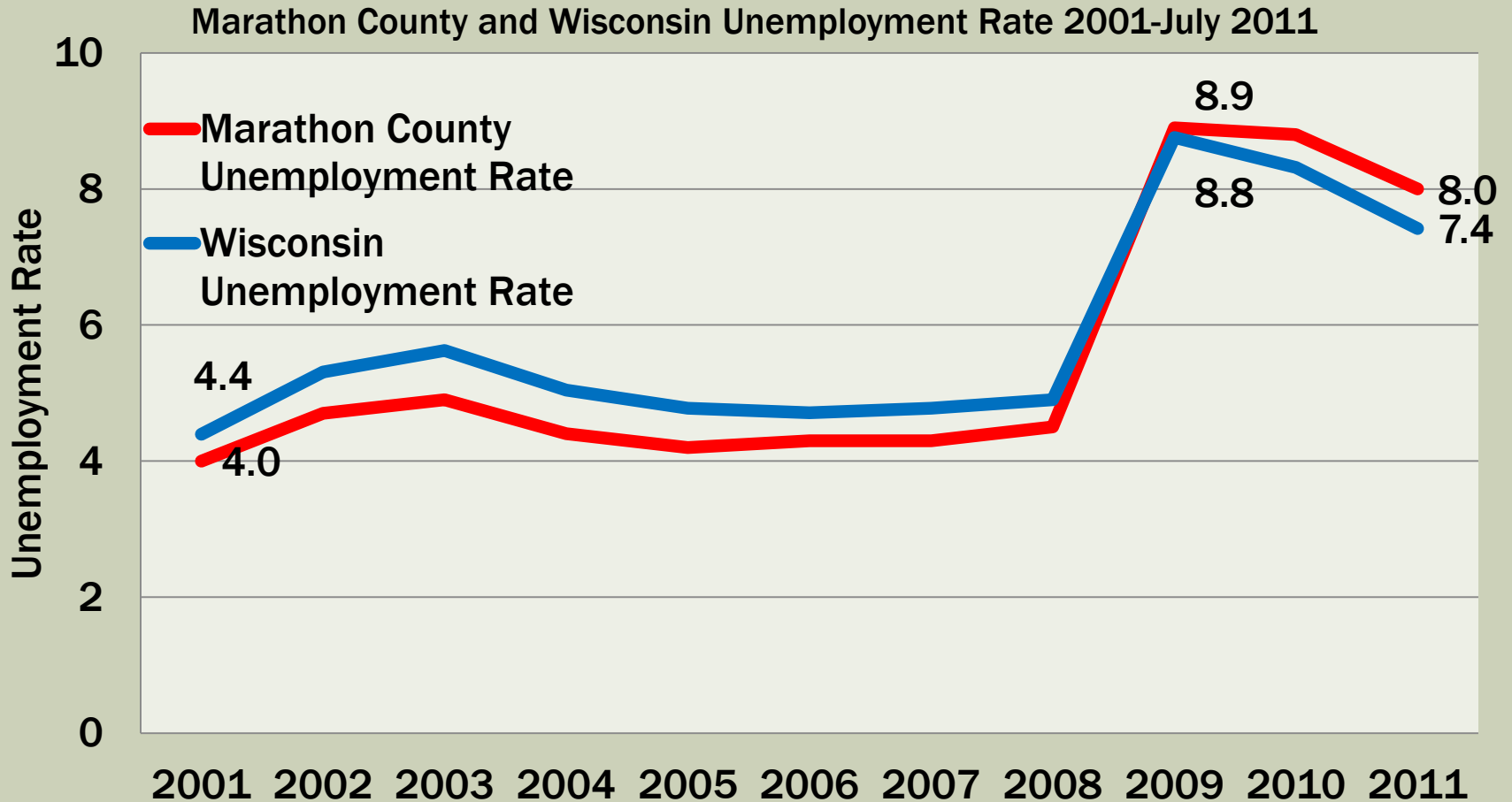
5 to 7

8 to 9

10 to 11

12 to 16

MARATHON COUNTY UNEMPLOYMENT RATE NOW ABOVE STATE RATE AFTER TRENDING LOWER, DOWN FROM PEAK



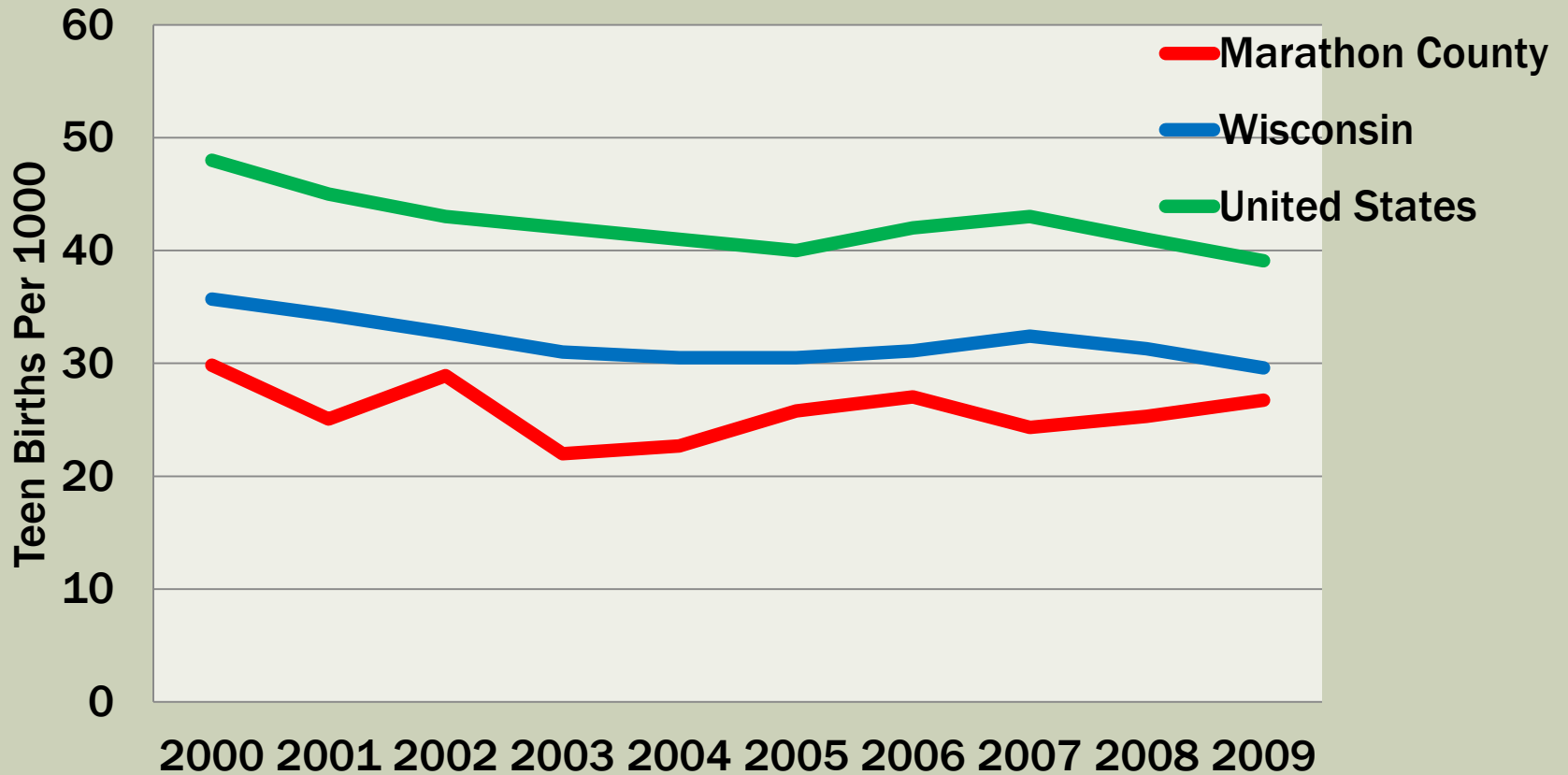
Source: U.S. Bureau of Labor Statistics

Improvements In Child Well Being Continue even in Recession

- National and WI trend in teen birth rate moving in positive direction
- Percent of teens not in school and not high school graduates has steadily declined
- Trend seen across largest racial and ethnic groups, but gaps remain



MARATHON COUNTY TEEN BIRTHRATE SLIGHTLY UP SINCE 2007 BUT TRENDING LOWER OVER DECADE

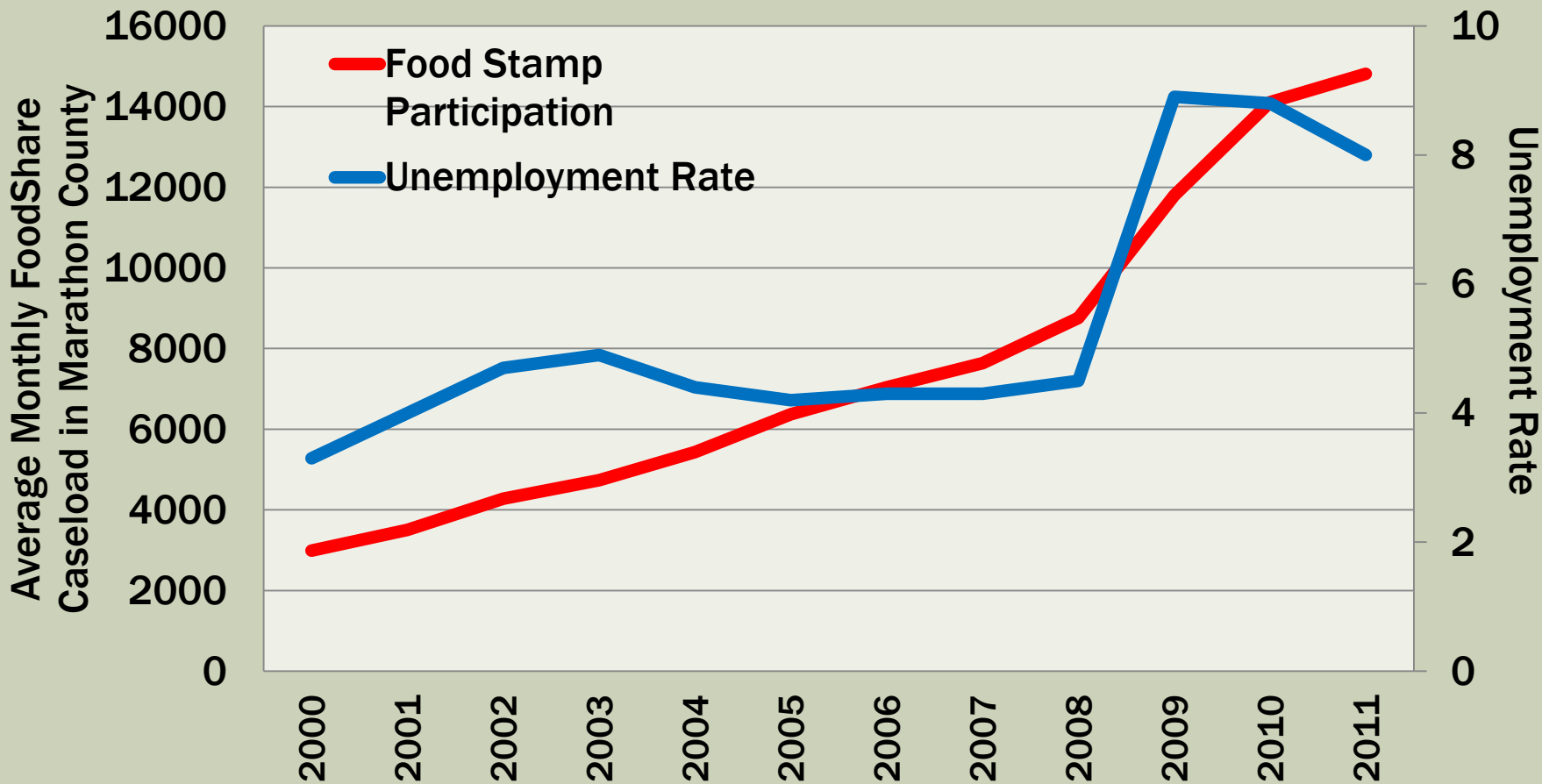


INFANT MORTALITY RATES DECLINE

(DEATHS PER 1000 LIVE BIRTHS)

- United States ↓ 4%
 - 2000: 7.1
 - 2009: 6.8
- Wisconsin ↓ 9%
 - 2000: 6.6
 - 2009: 6.0
- Marathon County ↓ 10%
 - 2000: 5.9
 - 2009: 5.4

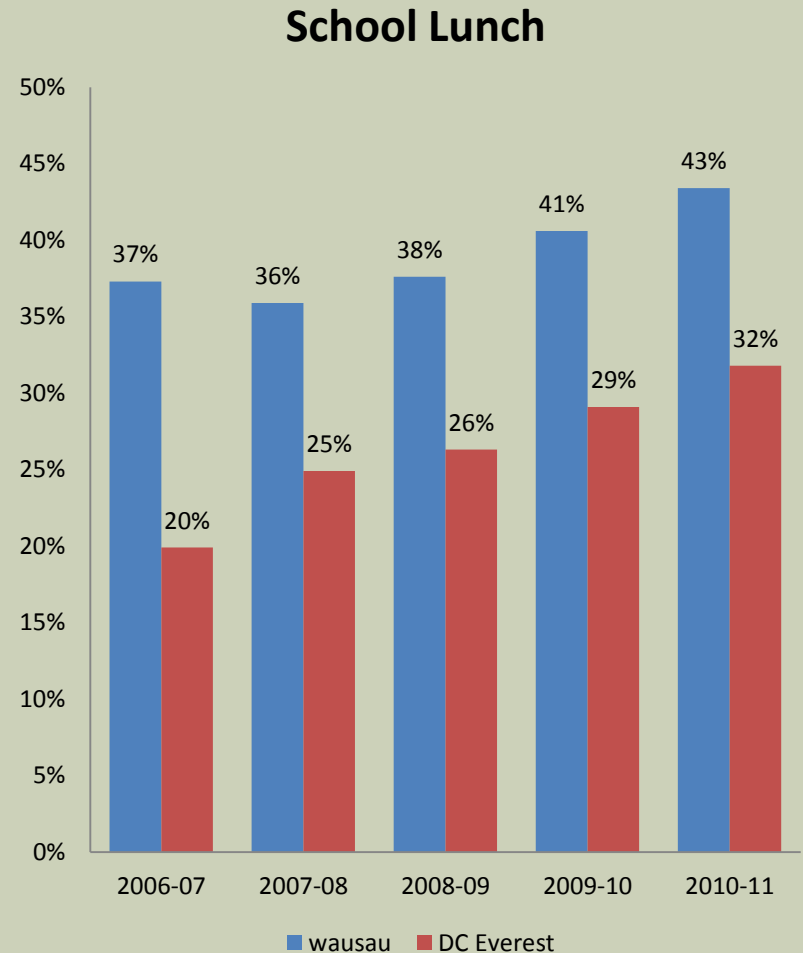
PUBLIC PROGRAMS ARE PROVIDING VITAL SUPPORT



Source: U.S. Bureau of Labor Statistics, Wisconsin Department of Health Services

IN MARATHON COUNTY

- **BadgerCare+ –** participation increased by 20% in 2009 alone
- **School lunch –** In the Wausau school district, 43% of children currently receive free and reduced price lunch.



STATE BUDGET CUTS PUT FAMILIES AT FURTHER RISK

- Cuts Earned Income Tax Credit for low-income working families by \$56.2 million over the biennium
- Repeals indexing of Homestead Tax Credit for property tax relief, reduces credits by a total of \$13.6million over the biennium
- Directs DHS to make cuts BadgerCare and Medicaid of \$467 million.

OPPORTUNITIES TO INVEST IN FAMILY ECONOMIC SUCCESS

- **Strengthen and modernize our unemployment insurance structure and promote foreclosure prevention**
- **Preserve programs that supplement poverty-level wages, offset the high cost of child care, and provide health insurance for parents and kids.**



GIVE EVERY CHILD THE OPPORTUNITY TO SUCCEED

- Ensure children are developmentally ready to succeed in school
- Make certain health care remains affordable and guaranties access to care.
- Promote reading proficiency by the end of third grade



WE CAN DO BETTER FOR WISCONSIN'S KIDS



**THANK YOU TO OUR FINANCIAL
SPONSORS!**

The Annie E. Casey Foundation

Marshfield Clinic

River Valley Bank

CONNECT WITH WCCF

- Website: www.wccf.org
- Facebook: www.facebook.com/wiskids
- Twitter: www.twitter.com/wiskids

