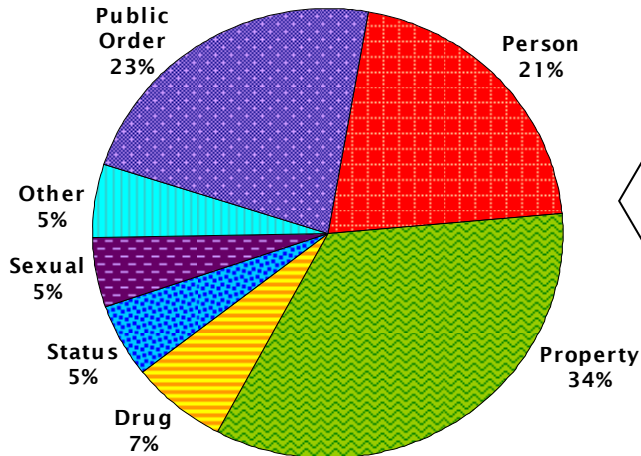


First Quarter of 2009

(January through March)

In the first quarter of 2009, nearly **2,800** youth were admitted to juvenile detention in Wisconsin

WCCF Quarterly Detention Report

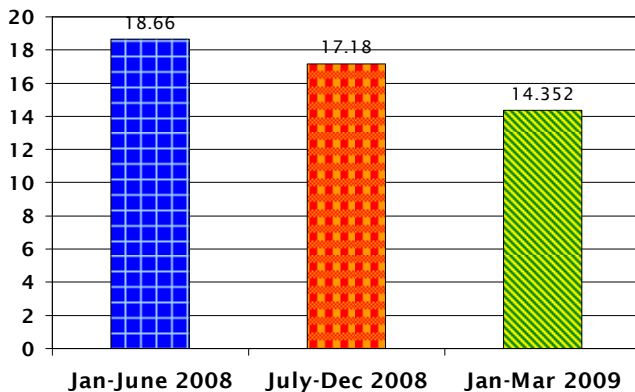
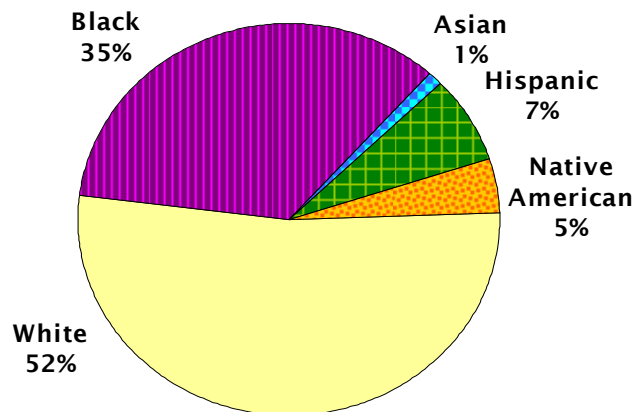


Breakdown by Offense (State)

- One primary purpose of detention is to protect the community from dangerous kids
- Crimes against persons are usually considered dangerous.
- Crimes against persons were 21% of all crimes this half, down 3% from the last half of 2008.

Breakdown by Race (State)

- 80% of Wisconsin's juvenile population aged 10-16 are White, but Whites only represent 52% of the juvenile detention population
- Black juveniles are 9% of the population but are 35% of detention's population



Average Daily Population

(Statewide trends)

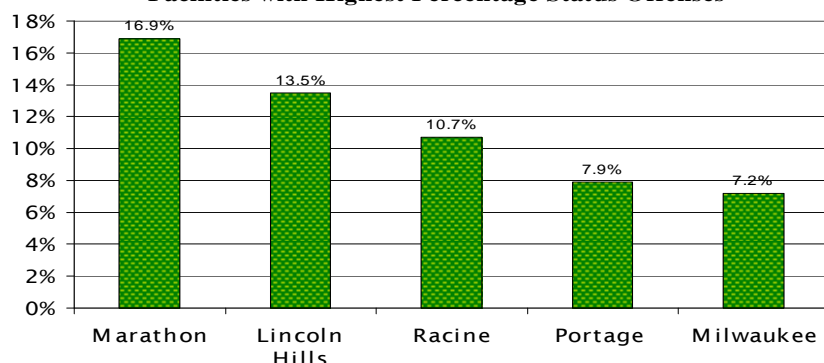
- ADP decreased from the 2nd half of 2008
- The total ADP for the first quarter of 2009 was 244 with a total capacity of 582 beds
- 14 facilities were operating with 50% or fewer available beds in use, on average

Additional Statewide Statistics

- Average length of stay for all youth released in this period was **8.8** days, and for status offenders specifically it was **4.8** days
- Average age statewide at admission is **15.2** years
- Girls were **23.2%** of all admissions and **58.6%** of status offenses

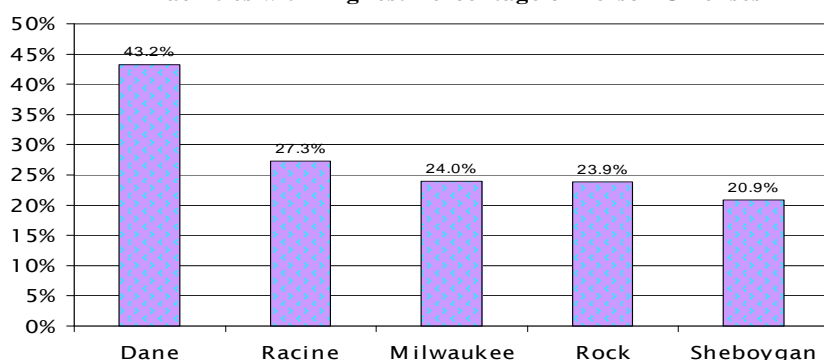
There are 17 Juvenile Detention Facilities around Wisconsin, many of which serve youth from multiple counties

Facilities with Highest Percentage Status Offenses



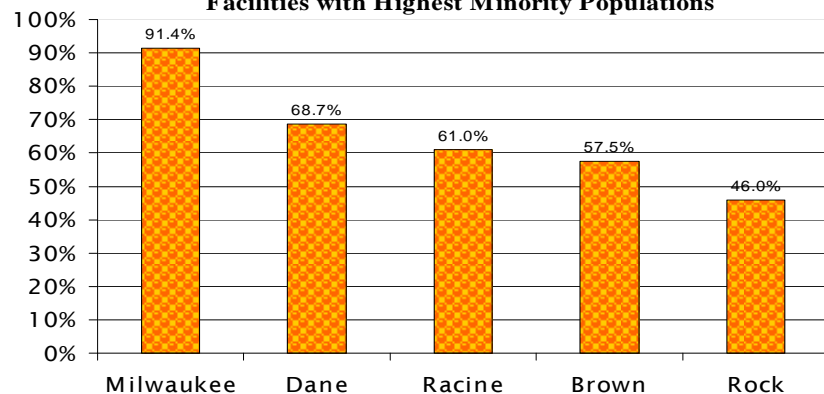
- State and Federal laws discourage holding juvenile status offenders in secure detention facilities
- Facilities ranged from 0% to 16.9% status offenders
- Status offenders may be run-aways or truants for example

Facilities with Highest Percentage of Person Offenses



- By statute, detention can be used if the juvenile has committed a delinquent act and presents substantial risk to a person or is a flight risk
- Person offenses pose the most risk to the community and most often fit these requirements
- Person offenses ranged from 0% to 43.2% this quarter

Facilities with Highest Minority Populations



- All counties have higher percentages of Whites than Minorities in the population
- These facilities represent the highest percentages of Minorities in detention
- All facilities had higher minority representation than the general population

Additional Facility Statistics

- Average length of stay ranged from **12.9** (Milwaukee) to **4.7** days (Oconto)
- Girls ranged from **40.6%** of Brown County's to **4.7%** of Waukesha County's population
- Property crime admissions ranged from **54.1%** at Lincoln Hills to **22%** in Sheboygan County

* Raw detention data obtained from the Office of Justice Assistance, Juvenile Justice Unit with assistance from the Department of Corrections, Office of Detention Facilities

* Population estimates from "Easy Access to Juvenile Populations: 1990-2007." Available online at <http://www.ojdp.ncjrs.gov/ojstatbb/ezapop>

* Percentages calculated and graphs created by WCCF

For more methodology information and explanations please visit http://www.wccf.org/justice_pub.php

For further information or to find out how your county does on outcome measures, please contact:

Jim Moeser

Wisconsin Council on Children and Families
555 West Washington Avenue, Suite 200
Madison, WI 53703
608-284-0580, ext 308
whenderson@wccf.org
www.wccf.org

